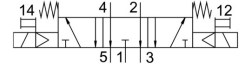


Air solenoid valve VSNC-F-P53E-MD-G14-F8

FESTO

Part number: 577261



Data sheet

| Feature | Value |
|--|--|
| Valve function | 5/3, exhausted |
| Actuation type | Electrical |
| Width | 32 mm |
| Standard nominal flow rate | 1050 l/min |
| Pneumatic working port | NAMUR connection diagram |
| Operating voltage | Via solenoid coil, to be ordered separately |
| Operating pressure | 3 bar ... 10 bar |
| Structural design | Piston gate valve |
| Reset method | Mechanical spring |
| Certification | c UL us - Recognized (OL) |
| Certificate issuing authority | DNVGL-TAA000011J |
| Type code | VSNC |
| Exhaust air function | With flow control option |
| Sealing principle | Soft |
| Mounting position | Any |
| Conforms to standard | VDI/VDE 3845 (NAMUR) |
| Manual override | Detenting Non-detenting |
| Type of control | Pilot-controlled |
| Pilot air supply port | Internal |
| Flow direction | Non-reversible |
| Symbol | 00991082 |
| Lap | Overlap |
| Signal status display | With accessories |
| b-value | 0.4 |
| C value | 4.4 l/sbar |
| Switching time off | 58 ms |
| On switching time | 14 ms |
| Changeover time | 25 ms |
| Duty cycle | 100% |
| Coil characteristics | See solenoid coil, to be ordered separately |
| Operating medium | Compressed air as per ISO 8573-1:2010 [7:4:4] |
| Information on operating and pilot media | Operation with oil lubrication possible (required for further use) |
| Corrosion resistance class (CRC) | 2 - Moderate corrosion stress |
| Temperature of medium | -20 °C ... 60 °C |
| Ambient temperature | -20 °C ... 60 °C |

| Feature | Value |
|-------------------------|----------------------------|
| Product weight | 345 g |
| Type of mounting | With through-hole |
| Venting hole connection | Not ducted |
| Pneumatic connection 1 | G1/4 |
| Pneumatic connection 2 | NAMUR connection diagram |
| Pneumatic connection 3 | G1/4 |
| Pneumatic connection 4 | NAMUR connection diagram |
| Pneumatic connection 5 | G1/4 |
| Note on materials | RoHS-compliant |
| Seals material | NBR |
| Housing material | Wrought aluminum alloy |
| Material of screws | High-alloy stainless steel |